



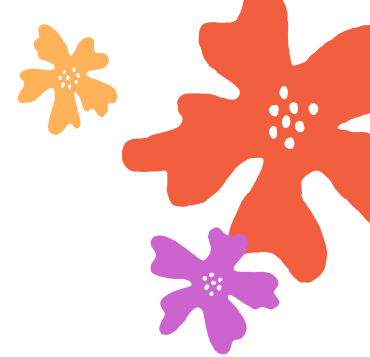
WAYFINDER

waikiki



Aloha

WAYFINDER
WAYKIKI



Wayfinder Waikiki melds immersive design with home-grown talent in a mindful and multilayered hotel experience that surfs the wave of Waikiki's vibrant and free-spirited energy. With large rooms, stacked amenities, and a genuinely hospitable team, we're here to make your stay great.

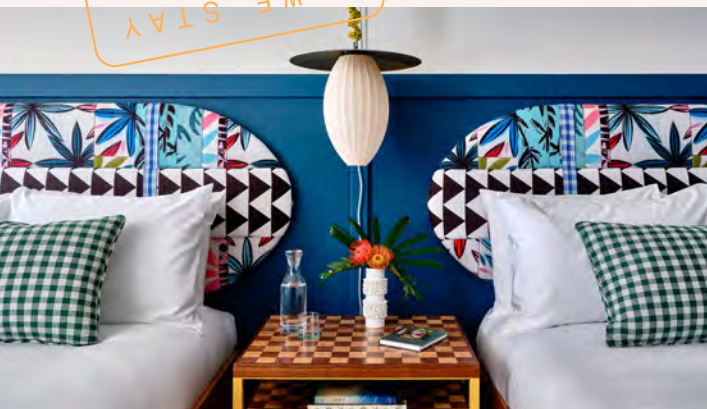


An Inspired Home Base

Inspired by the scenery and mix of cultures that make Hawaii, our design-centric rooms and poolside studios are stocked with essentials for a laid-back stay—plus custom robes, Grown Alchemist bath products and all the local art we could find.

Guestrooms

Welcome to a fresh take on the Waikiki hotel experience. Our poolside studio suites and vibrant hotel rooms in Honolulu, Hawaii, feature distinctive, dreamy interiors with local touches for the ultimate laid-back stay.



King Bed with Lanai

1 KING BED | 242 SQ. FT. | SLEEPS 2

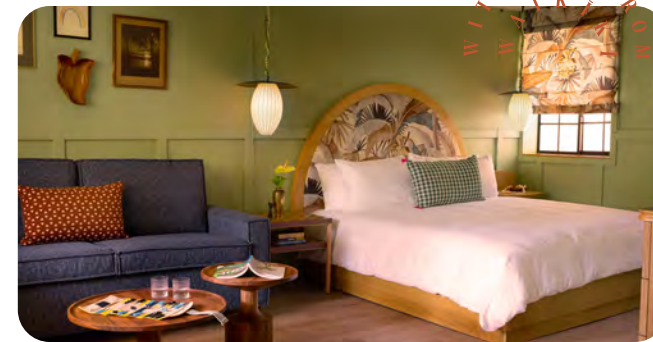
Comfortable rooms feature king-size beds, a private lanai for two and immersive design.



Corner King Room with Lanai

1 KING BED | 275 SQ. FT. | SLEEPS 2

This cozy, design-centric corner room features a king bed, an oversized private lanai, and extra amenities such as yoga mats with stretching straps.



Pool House Studio King Bed

1 KING BED | 1 SOFA SLEEPER | 484 SQ. FT. | SLEEPS 3

Located in the Pool House, this studio suite offers everything you could ask for. A king bed and queen-size pull-out sofa make it ideal for families or groups of friends.

Two Double Beds with Lanai

2 DOUBLE BEDS | 242 SQ. FT. | SLEEPS 4

Featuring two double beds and a private lanai, these quaint and stylish rooms are ideal for families or friends traveling together.



Pool House Studio Two Queen Beds

2 QUEEN BED | 484 SQ. FT. | SLEEPS 4

Stylish and inviting, this Pool House suite features two queen beds, a fully appointed wet bar, and extra amenities such as yoga mats with stretching straps.



Penthouses & Suite

There are two Penthouse suites at Wayfinder Waikiki: the Mauka and the Makai Penthouse. While both Penthouses are independent of each other, they may also be joined to create an epic two bedroom and two bath Penthouse. We also offer the Wayfinder suite, which was designed by local designer Michelle Jaime.



Mauka Penthouse

**ROOM 1401 | 700 SQ. FT. INDOOR
750 SQ. FT. OUTDOOR | SLEEPS 4**

Indulge in the sophistication of our spacious Penthouse suite, offering refined indoor living space and a private lanai with partial views of the ocean and the city. The kitchenette and sofa sleeper provides the ideal amenities for longer stays, and the large patio with chaise lounges and outdoor dining set let you take in the Hawaiian vibes.



OFF-BEAT
RETREAT

Makai Penthouse

**ROOM 1402 | 545 SQ. FT. INDOOR
1,125 SQ. FT. OUTDOOR | SLEEPS 4**

Experience luxury in our stunning penthouse suite, featuring elegantly designed indoor space and an expansive outdoor area. Enjoy breathtaking views of Diamond Head and the hills on the Ala Wai Canal side from your private lanai. Savor the convenience of a fully equipped kitchenette for a perfect blend of comfort and style.



Wayfinder Suite

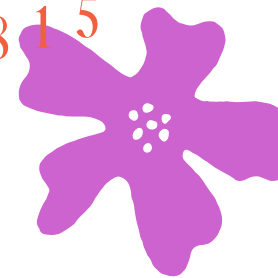
**ROOM 1210 | 600 SQ. FT. INDOOR
375 SQ. FT. OUTDOOR | SLEEPS 4**

This one-bedroom, one-and-a-half bathroom is a newly renovated suite located on the 12th floor, totaling over 950 square feet of indoor and outdoor space. It's surrounded by three private lanais fostering an expansive island view, a kitchenette, sofa sleeper, and makes the perfect location for a Hawaiian retreat.





9 6 8 1 5



Unfiltered Fun

Lounge poolside, surf legendary waves, taste fresh Hawaiian flavors, or just relax into the rhythm of the day. The Wayfinder was built for mindful exploration of this incredible community we call home—discover Waikiki with a local compass and see what all the fuss is about.

All In Good Taste

Explore Waikiki's newest culinary destination. Indulge in fresh, tropical cocktails at our poolside bar, Lost + Found, grab your morning coffee at B-Side, or dig into the island's most innovative poke bowls at Redfish.

OFF-BEAT
RETREAT



B-Side Coffee Bar

Proudly on the flip side of Waikiki, B-Side offers an ever-evolving assortment of treats: coffee, tea, breakfast, sandwiches, cookies, apparel, and swag. Whether you're heading out early to catch the waves, packing a beach picnic, or looking for an afternoon snack, we've got you.

Open Daily: 6 am – 5 pm



Lost + Found

Lush, tropical energy lives at our poolside bar, where your fill of fresh, handcrafted cocktails and inventive munchies round out a perfect day spent under the Waikiki sun. Join us for happy hour!

Open Daily: 10 am – 9 pm

Happy Hour: 5 pm – 7 pm



ALOHA 

Redfish

The Redfish team presents a modern take on Hawaii's favorite food with a mouth-watering variety of fresh and authentic poke, and endlessly creative fixings. Stop in to satisfy your cravings for breakfast, lunch, or dinner.

Open Daily: 6 am – 10 pm

Happy Hour: 2 pm – 5 pm

F
I
N
D
Y
W
A
Y
E
R

Soak Up the Sun

Expansive and lush, the 70 ft. saltwater pool offers plenty of space to lounge—plus a poolside bar with ice-cold cocktails and the very best vibes.

COME TO
YOUR
SENSES



9 6 8 1 5

Hotel Happenings

Wayfinder offers a range of onsite activities designed to rejuvenate your mind and body. Begin your day with a refreshing stretch by the pool, energize with a dynamic circuit class, or simply relax while lounging poolside, soaking up the Waikiki sun and the upbeat tunes of local artists.

FIND YOUR
WAY TO THE
WAYFINDER



Poolside Punawai Stretch

Immerse yourself in a captivating class centered around harmonizing movement and breath, guided by the experienced activities specialist. As a practitioner of this distinctive stretching approach, this class promises a revitalizing start to your day.



E Ola Koa Circuit Class

Led by our fitness enthusiast, this class focuses on building a strong foundation from the ground up and creates a safe space for guests to challenge their abilities, drawing inspiration from the Hawaiian saying 'E ola koa'—to live strong like a Koa tree.



Poolside Vibes

Sip, swim, and lounge to the beats of our favorite artists poolside and at Lost + Found. From island grooves to global tunes, dance the sun away and soak up the magic of music in the heart of Waikiki.



Your Guide to Waikiki

Set in Oahu's South Shore, the Wayfinder Hotel is just minutes away from everywhere you want to be. Make your way down to the Ala Wai Canal for a jog or a bike ride before heading out to explore the city. From shopping, drinking, and world-class dining to the gentle surf of Waikiki Beach—there's so much to explore.



Neighborhood Perks

See Waikiki through our eyes with special offers at our favorite local spots: Bishop Museum, Moniz Family Surf, Pink Sails Waikiki, Leahi Voyager, and so much more!



Moke Rental

This 20th-century collectible car is green-friendly, electric-powered, carbon-free, and efficient.



South Shore

Melding vibrant city energy with peaceful beach vibes, South Shore is home to white-sand beaches, beautiful hikes, and the island's best restaurants and retail.



Downtown Honolulu

Just 15 minutes west of Waikiki, downtown Honolulu is home to many historical landmarks, fresh cuisine, and incredible murals from local artists for all to enjoy.



North Shore

About an hour from Waikiki, Hawaii's lush, tropical wilderness is on full display in the surfing capital of the world. Take a day trip and discover the true spirit of aloha.



Attractions

Mountains, ocean and lush forest come together on the East Side of Oahu. Venture 15 minutes from Waikiki for coastal roads, wild beaches, and hiking trails.

A L O H A



Let's Get Together

Here in Waikiki, we love a good get-together. The Wayfinder is an inspiring backdrop for events in Honolulu, Hawaii with next-level catering, great deals on guest room blocks, and a friendly and dedicated events team.



Event Spaces + Capacity

	Sq. Ft. (in/out)	Classroom	Theatre	Banquet	Reception	U Shape	Conference	Existing
REDFISH POKE BAR WAIKIKI	2,000			110	200			110
B*SIDE	500				20			20
LOST+FOUND	750			20	35			35
Mauka Penthouse Room 1401	700/750	12	20	30	40	9	12	
Makai Penthouse Room 1402	545/1,125	12	20	40	50	9	12	
Wayfinder Suite Room 1210	600/375	10	18	10	20	6	10	





WAYFINDER
waikiki

wayfinderwaikiki.com | 808-922-4744
aloha@wayfinderwaikiki.com
2375 Ala Wai Blvd, Honolulu, Hawaii 96815