

# WAYFINDER

*waikiki*



## Welcome to Wayfinder Waikiki

Wayfinder is a boutique hotel in the heart of vibrant Waikiki, where a hidden oasis reveals an immersive and fresh take on the traditional Hawaii hotel experience. Not just a destination, Waikiki is an ever-evolving multicultural hub where downtown energy meets lush, tropical beauty. Let Wayfinder Waikiki be your guide.



# Your Home Base

Welcome to a fresh take on the Waikiki hotel experience. Our poolside studio suites and vibrant hotel rooms in Honolulu, Hawaii offer distinctive and dreamy interiors with local touches for the ultimate laid-back stay.

OFF-BEAT  
RETREAT



## Event Spaces + Capacity

WITH LOVE FROM  
WAIKIKI

	Sq. Ft. (in/out)	Classroom	Theatre	Banquet	Reception	U Shape	Conference	Existing
<b>REDFISH</b> POKE BAR WAIKĪKĪ	2,000			110	200			110
<b>B*SIDE</b>	500				20			20
<b>LOST+FOUND</b>	750			20	35			35
<b>Mauka Penthouse</b> Room 1401	700/750	12	20	30	40	9	12	
<b>Makai Penthouse</b> Room 1402	545/1,125	12	20	40	50	9	12	
<b>Wayfinder Suite</b> Room 1210	600/375	10	18	10	20	6	10	

# Penthouses & Suite

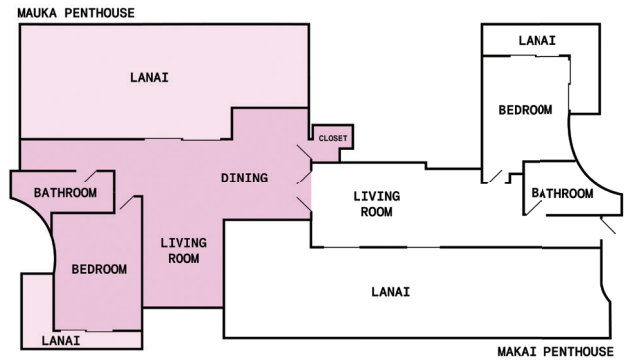
There are two Penthouse suites at Wayfinder Waikiki, the Mauka and Makai Penthouses. While both are independent of each other, they may also be joined to create an epic two bedroom and two bath Penthouse. We also offer the Wayfinder Suite which was designed by local designer Michelle Jaime.



## Mauka Penthouse

### Room 1401

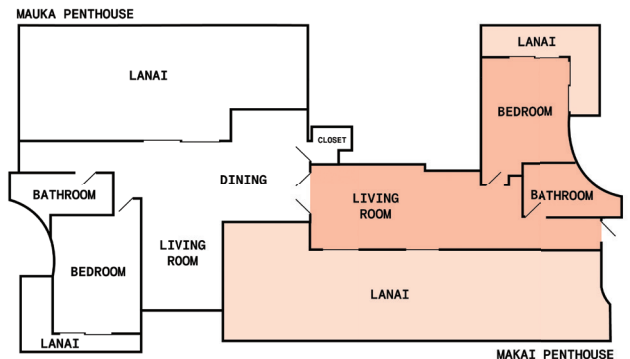
- This spacious and versatile penthouse offers an incredible lanai with partial view of the ocean and the city
- **Seating Capacity: Up to 30 guests seated or 40 guests for a reception**



## Makai Penthouse

### Room 1402

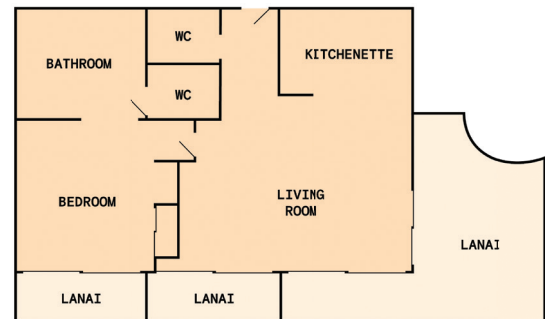
- Enjoy a bird's eye view of Waikiki with enormous lanais that includes partial views of Diamond Head and hills beyond the Ala Wai waterway
- **Seating Capacity: Up to 40 guests seated or 50 guests for a reception**



## Wayfinder Suite

### Room 1210

- This suite offers spacious lanais with amazing views or the Waikiki area
- **Seating Capacity: Up to 10 guests seated boardroom style or 20 guests for a reception style gathering**





## Penthouses\* and Suite Catering Services

### WAYFINDER ~ CATERED RECEPTION OPTIONS

- 20-50 people
- Setup: (2) setup staff
  - Cocktail tables, food tables, chafers, bar, ice-coolers, linens, table décor, and signage
- (1) Bar: (1) Bartender
  - Beer, wine, wells, and a juice/tea selection
- Light pupus: total (2) servers: (1) runner + (1) floor food server

### WAYFINDER ~ FAMILY STYLE MEAL OPTIONS

- 10-40 people
- Setup: (2) setup staff
  - Tables with chairs, food tables, ice-coolers, a freezer, linens, table décor, and signage
- (2) Servers to assist in service drink menu
  - Pre-ordered drinks, or by the bottle. Limited drink options for add-ons family style dishes

For larger events, the Makai and Mauka Penthouses can be combined to accommodate the most memorable experiences. By utilizing a spacious lanai for a reception of cocktails and pupus while the other lanai is set to perfection for a meal of unparalleled delight.

Let us plan an event that inspires and satisfies your occasion. From efficient options like continental breakfast and boxed luncheons, to entertainment filled receptions and dinners, our team can assist in planning and executing your next event.

Catered food menu made by Redfish.

\*Penthouse units require the use of stairs for access - these units are not ADA accessible.

